



Noah's Ark Independent Primary School

Subject: NS and T	Examiner: Moyo, S.
Type: Summative Term I	Moderator: Rwizi, A.
Date: 8 April 2021	Grade: 5-____
Marks: 50 Marks	Time: 1 hour 15 minutes

Name: _____

Instructions

- Read the questions carefully before you start writing.
- Make sure you answer All the questions.
- Write neatly and legibly.

1. Match the correct words in Column A to the definition in column B. (5)

Column A	Answer	Column B
1.1 Strut		a) Struts joined together to form a strong frame.
1.2 Exoskeleton		b) An animal without a skeleton
1.3 Vertebrate		c) A hard outer covering that protects
1.4 Frame structure		d) A very strong rod
1.5 Invertebrate		e) An animal with a skeleton.

2. Underline the correct word in brackets in the sentences. (5)

2.1 Plants need (heat / sunlight) to make their own food.

2.2 Animals that eat only plants are called (carnivores / herbivores / omnivores).

2.3 A pollinator such as a (sperm / ovule / insect) visits a flower in search of nectar.

2.4 Petals protect the flower when it is a (bud / seed / root).

2.5 Pollen is produced in the (ovary / anther / stigma) of a flower.

3. A life cycle describes the stages of processes that take place as a plant grows.

3.1 Re-arrange these stages in the life cycle of a plant in the correct order. (5)

Adult plant ; seedling ; fruiting plant ; seed ; flowering plant

----- ; ----- ; ----- ; ----- ; -----

3.2 Name the process that takes a plant from fruiting plant to seed. (1)

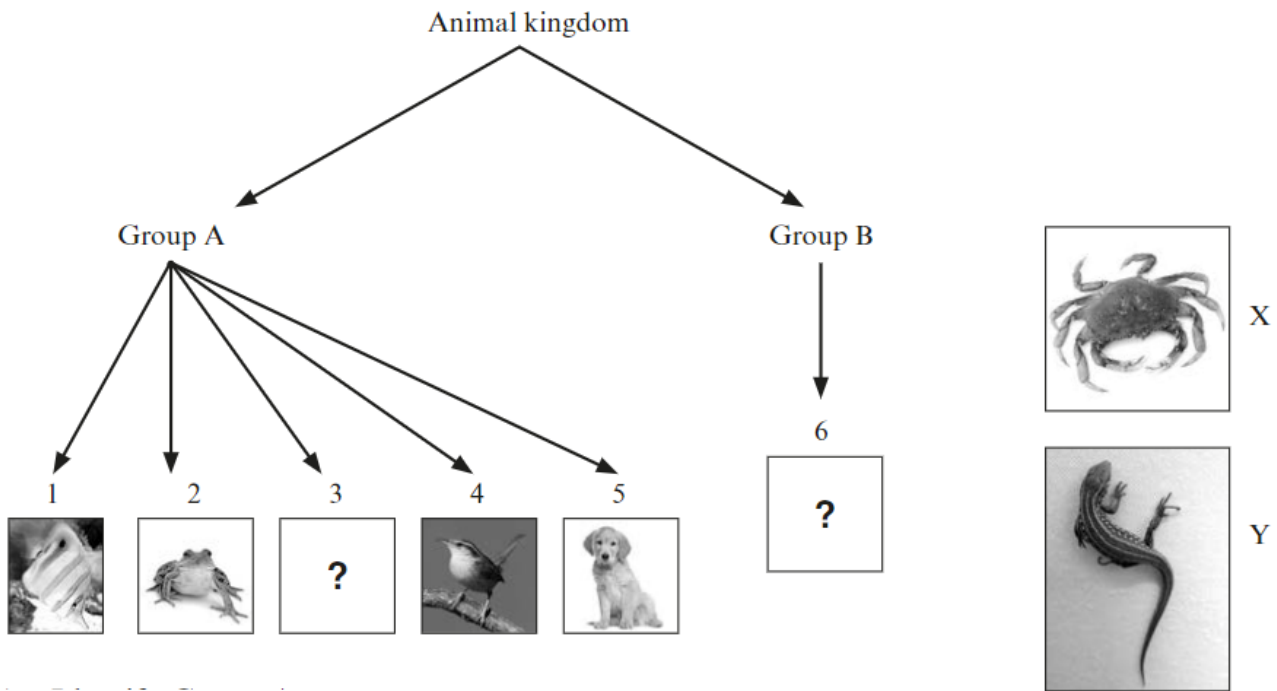
4. Muscles play an important role in a body.

4.1 Briefly describe how muscles work. (3)

4.2 What is used to attach the muscles to the bones. (1)

4.3 If a bone is broken in a body, it can heal itself. Explain how this is possible. (2)

5. Study the diagram below and answer the questions that follow.



Source: Platinum Grade 5 Natural Science and Technology Teacher's Guide, page 95.

5.1 Identify Group A. (1)

5.2 Look at animals X and Y alongside the question. At which numbers in the diagram would you place these animals? (2)

5.3 Name two different features which are used to classify these animals in Groups A and B. (2)

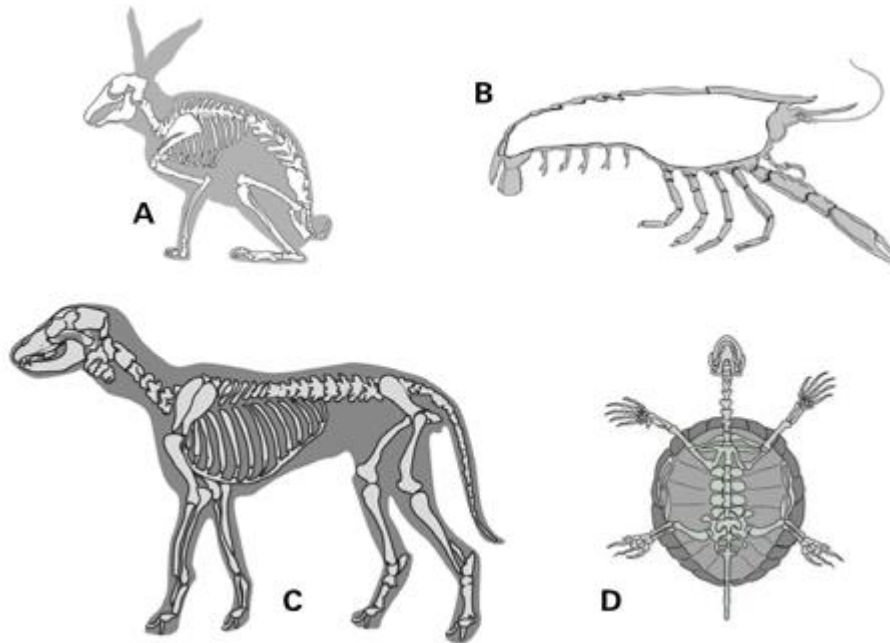
6. Complete the table below. (3)

Part of the skeleton	What it protects
b.1	Lungs and heart
b.2	Brain
Backbone	b.3

b.4 Give a scientific name of the part in question b.2 (1)

b.5 Explain what the backbone is made of. (1)

7. Look at the pictures of animal skeletons, A to D, below.



Source: Grade 5 Platinum Natural Science and Technology, Learner's Book, page 36.

7.1 Which of the animals are vertebrates and which are invertebrates? (2)

7.2 Classify each skeleton as a frame structure or a shell structure. (2)

7.3 What is special about the tortoise's skeletal structure and body? (1)

7.4 How does the skeleton of a vertebrate give its body strength and support? (3)

7.5 How do the skeletons of some invertebrates give their bodies strength and support? (2)

8. Mr Green owns a piece of land, where he planted a garden. In the garden there are vegetables. Snails come to eat the vegetables and birds come to eat the snails and vegetables.

8.1 Advise Mr Green on what he should do to ensure his harvest is not affected. (4)

8.2 Suggest what could happen if all the snails are killed. (3)

8.3 Give a name to the relationship shown in the garden. (1)

_____ / 50 Marks